

Teknik bilgiler model CPE/CPEF

Model	EAN-No. 4025092*	Kapasite kg/ zincir donanı	Zincir ölçüleri d x t mm	Sınıflandırma FEM/ISO	Kaldırma hızı ana m/dak	Kaldırma hızı hassas m/dak	Motor kW	Çalışma ED %
CPE 16-8	*073240	1.600/1	11x31	1Am/M4	8	-	2,3	40
CPEF 16-8	*073257	1.600/1	11x31	1Am/M4	8	2	2,3/0,58	40/20
CPE 20-8	*073264	2.000/1	11x31	1Bm/M3	8	-	2,8	25
CPEF 20-8	*073271	2.000/1	11x31	1Bm/M3	8	2	2,8/0,7	25/15
CPE 25-5	*073288	2.500/1	11x31	1Am/M4	5	-	2,3	40
CPEF 25-5	*073295	2.500/1	11x31	1Am/M4	5	1,25	2,3/0,58	40/20
CPE 30-5	*073301	3.000/1	11x31	1Bm/M3	5	-	2,8	25
CPEF 30-5	*073318	3.000/1	11x31	1Bm/M3	5	1,25	2,8/0,7	25/15
CPE 32-4	*073325	3.200/2	11x31	1Am/M4	4	-	2,3	40
CPEF 32-4	*073332	3.200/2	11x31	1Am/M4	4	1	2,3/0,58	40/20
CPE 40-4	*073349	4.000/2	11x31	1Bm/M3	4	-	2,8	25
CPEF 40-4	*073356	4.000/2	11x31	1Bm/M3	4	1	2,8/0,7	25/15
CPE 50-2	*073363	5.000/2	11x31	1Am/M4	2,5	-	2,3	40
CPEF 50-2	*073370	5.000/2	11x31	1Am/M4	2,5	0,6	2,3/0,58	40/20
CPE 75-1,6	*079907	7.500/3	11x31	1Am/M4	1,6	-	2,8	40
CPEF 75-1,6	*079914	7.500/3	11x31	1Am/M4	1,6	0,4	2,8/0,58	40/20
CPE 100-2	*060585	10.000/4	11x31	1Am/M4	2,5	-	2x2,3	40
CPEF 100-2	*060592	10.000/4	11x31	1Am/M4	2,5	0,6	2x2,3/0,58	40/20

Model	Ağırlık* Askı halkası kg	Ağırlık* İtme şaryo kg	Ağırlık* Zincirli şaryo kg	Ağırlık* Elektrikli şaryo** kg
CPE 16-8	88	150	154	164
CPEF 16-8	93	155	159	169
CPE 20-8	88	150	154	164
CPEF 20-8	93	155	159	169
CPE 25-5	88	150	154	164
CPEF 25-5	93	155	159	169
CPE 30-5	88	150	154	164
CPEF 30-5	93	155	159	169
CPE 32-4	107	169	173	182
CPEF 32-4	112	174	178	187
CPE 40-4	107	169	173	182
CPEF 40-4	112	174	178	187
CPE 50-2	107	169	173	182
CPEF 50-2	112	174	178	187
CPE 75-1,6	220	320	320	340
CPEF 75-1,6	226	326	326	346
CPE 100-2***	282	-	385	406
CPEF 100-2***	287	-	390	411

*Ağırlık standart yükseklik (3m) içindir. Diğer kaldırma yükseklikleri talep üzerine.

** 2 hızlı versiyon için ek ağırlık, 2,0 kg

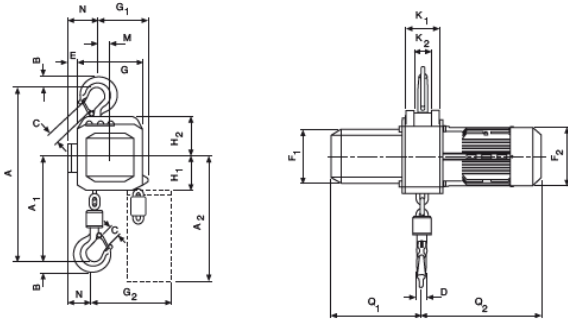
*** En yüksek ve alçak kanca konumları için limit anahtarları- 42V alçak gerilim kumanda.

Teknik bilgiler Şaryolar

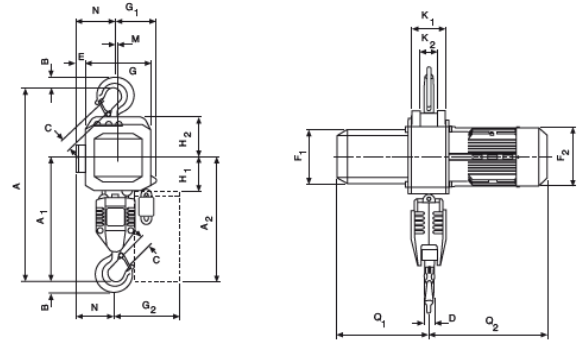
Kapasite kg	Boyut	Kiriş flanş genişliği b mm	Kiriş flanş kalınlığı t maks. mm	Yay yarıçapı min. m	Yürüme hızı 50 Hz 'de m/dak	Motor gücü 50 Hz 'de kW
1.600 - 5.000	A	98 - 180	27	2,0	11 or 11/2,8	0,37 or 0,3/0,09
1.600 - 5.000	B	180 - 300	27	1,8	11 or 11/2,8	0,37 or 0,3/0,09
7.500 - 10.000	B	125 - 310	40	1,8	5 or 5/1,25	0,55 or 0,55/0,12

Boyutlar model CPE/CPEF

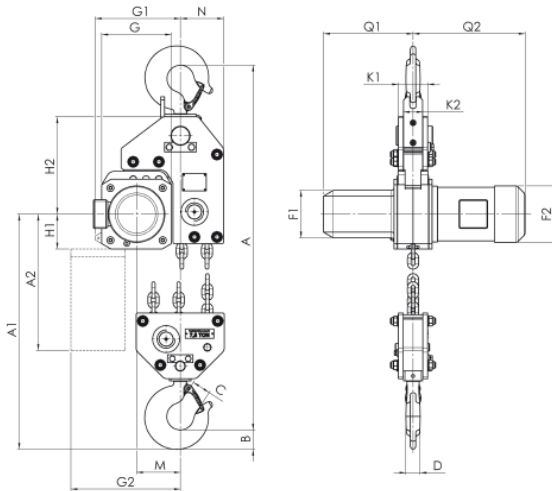
Model	CPE/CPEF 16-8	CPE/CPEF 20-8	CPE/CPEF 25-5	CPE/CPEF 30-5	CPE/CPEF 32-4	CPE/CPEF 40-4	CPE/CPEF 50-2	CPE/CPEF 75-1,6	CPE/CPEF 100-2
A, mm	516	516	516	516	681	681	681	950	1.068
A1, mm	286	286	286	286	428	428	428	479	651
A2 (13m), mm	430	430	430	430	430	430	430	-	-
A2 (21 m), mm	530	530	530	530	530	530	530	530	555
B, mm	35	35	35	35	45	45	45	60	60
C, mm	37	37	37	37	46	46	46	52	52
D, mm	24	24	24	24	30	30	30	40/45	40/45
E, mm	24	24	24	24	24	24	24	-	-
F1, mm	160	160	160	160	160	160	160	160	160
F2, mm	178	178	178	178	178	178	178	178	178
G, mm	220	220	220	220	220	220	220	220	-
G1, mm	180	180	180	180	140	140	140	268	315
G2 (13 m), mm	257	257	257	257	218	218	218	-	-
G2 (21 m), mm	277	277	277	277	238	238	238	345	408
H1, mm	110	110	110	110	110	110	110	110	135
H2, mm	135	135	135	135	135	135	135	307	256
K1, mm	100	100	100	100	100	100	100	92	92
K2, mm	51	51	51	51	51	51	51	62	62
M, mm	50	50	50	50	10	10	10	138	-
N, mm	84	84	84	84	124	124	124	136	390
Q1, mm	280	280	280	280	280	280	280	280	280
Q2 (CPE), mm	362	362	362	362	362	362	362	362	362
Q2 (CPEF), mm	417	417	417	417	417	417	417	417	417



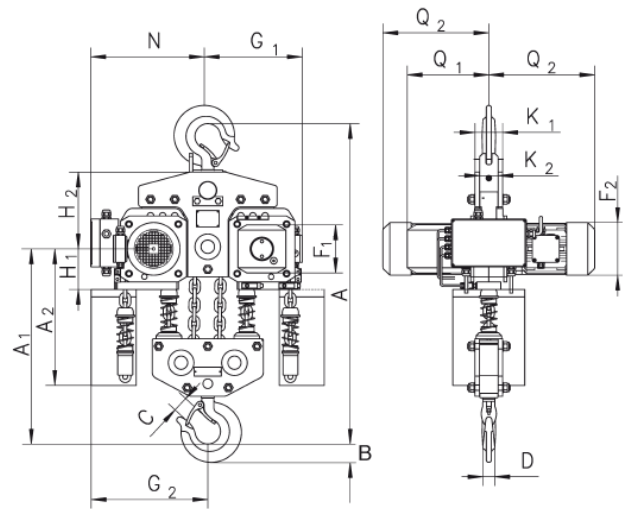
Model CPE/CPEF askı kancalı, 1.600 -3.000kg, tek zincir donamlı



Model CPE/CPEF askı kancalı, 3.200 -5.000kg, çift zincir donamlı



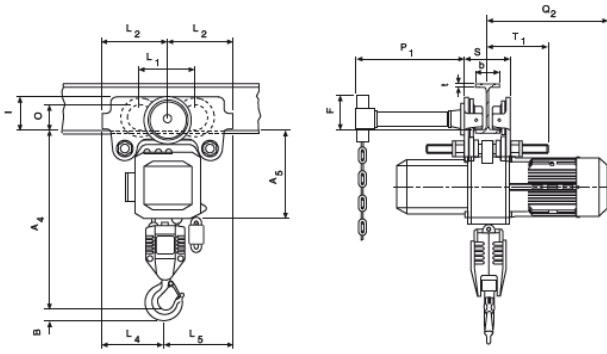
Model CPE/CPEF 75-1.6, askı kancalı, 7.500kg



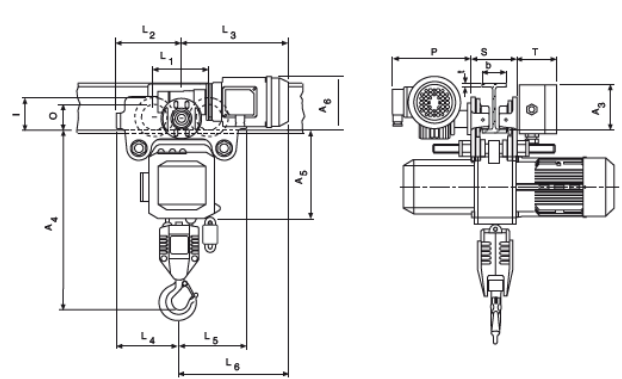
Model CPE/CPEF 100-2, askı kancalı, 10.000 kg

Boyutlar model CPE/CPEF

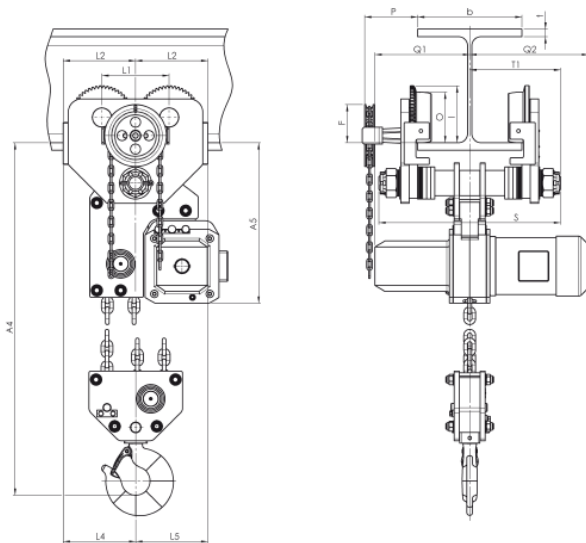
Model	CPE/CPEF 16-8	CPE/CPEF 20-8	CPE/CPEF 25-5	CPE/CPEF 30-5	CPE/CPEF 32-4	CPE/CPEF 40-4	CPE/CPEF 50-2	CPE/CPEF 75-1,6	CPE/CPEF 100-2
A3, mm	121	121	121	121	121	121	121	-	110
A4, mm	465	465	465	465	615	615	615	855	965
A5, mm	298	298	298	298	298	298	298	477	450
A6, mm	178	178	178	178	178	178	178	-	170
b, mm	A = 98 - 180/ B = 180 - 300	A = 98 - 180/ B = 180 - 300	A = 98 - 180/ B = 180 - 300	A = 98 - 180/ B = 180 - 300	A = 98 - 180/ B = 180 - 300	A = 98 - 180/ B = 180 - 300	A = 98 - 180/ B = 180 - 300	125 - 310	125 - 310
F, mm	150	150	150	150	150	150	150	113	113
I, mm	142,5	142,5	142,5	142,5	142,5	142,5	142,5	170	170
L1, mm	209	209	209	209	209	209	209	200	200
L2, mm	262,5	262,5	262,5	262,5	262,5	262,5	262,5	215	215
L3 (VTE), mm	292	292	292	292	292	292	292	-	335
L3 (VTEF), mm	296	296	296	296	296	296	296	-	335
L4, mm	213	213	213	213	253	253	253	215	390
L5, mm	312	312	312	312	272	272	272	215	215
L6 (VTE), mm	342	342	342	342	342	342	342	-	-
L6 (VTEF), mm	346	346	346	346	306	306	306	-	-
O, mm	125	125	125	125	125	125	125	150	150
P (VTE), mm	197	197	197	197	197	197	197	-	273
P (VTEF), mm	205	205	205	205	205	205	205	-	280
P1, mm	229	229	229	229	229	229	229	-	110
S, mm	b + 70	b + 70	b + 70	b + 70	b + 70	b + 70	b + 70	b + 98	b + 98
T, mm	94	94	94	94	94	94	94	-	94
tmaks., mm	27	27	27	27	27	27	27	40	40



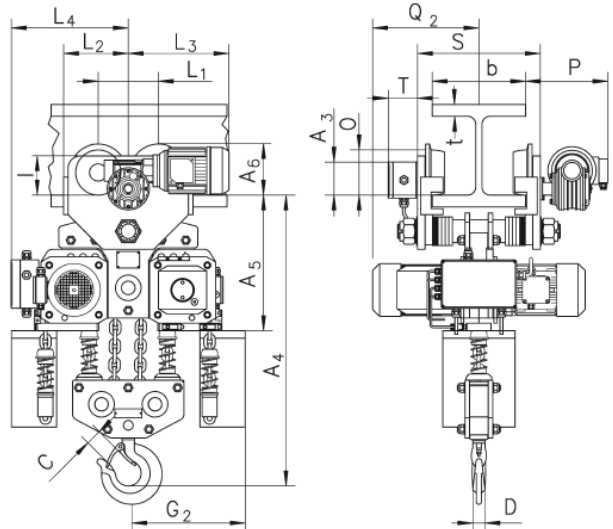
Model CPE/CPEF askı kancalı, 1.600 -3.000kg, tek zincir donanlı



Model CPE/CPEF askı kancalı, 3.200 -5.000kg, çift zincir donanlı



Model CPE/CPEF 75-1,6, askı kancalı, 7.500kg



Model CPE/CPEF 100-2, askı kancalı, 10.000kg