

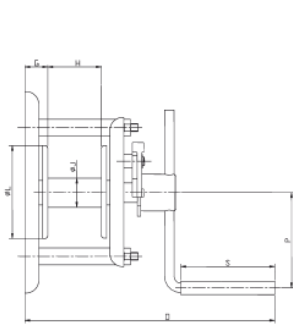
## Teknik bilgiler model MWS

Model	EAN-No. 4025092*	Kapasite 1. sarım	Kapasite üst sarım	Manivela gücü 1.sarım	Her manivela dönüşü için kaldırma 1.sarım	Her manivela dönüşü için kaldırma üst sarım	Oran	Halat hariç ağırlık	Halat çapı*	Halat kopma yükü min.	Kullanıla- bilir halat uzunluğu 1.sarım	Kullanıla- bilir halat uzunluğu maks.	Sarım sayısı maks.
		kg	kg	daN	mm	mm		kg	mm	kN	m	m	
MWS 125	*080064	125	55	11	120	390	1:1	7	3	5,7	1.sarım	52	18
MWS 300	*080071	300	120	7	21	57	1:7,4	10	5	15,9	m	26	9
MWS 500	*080088	500	323	13	30	52	1:7,4	11	6	22,9	1,4	12	5
MWS 1000	*080095	1.000	684	15	21	33	1:17	28	9	51	3,4	27	5
MWS 2000	*080101	2.000	1.712	24	16	19	1:25,7	32	13	106	2,3	7	2

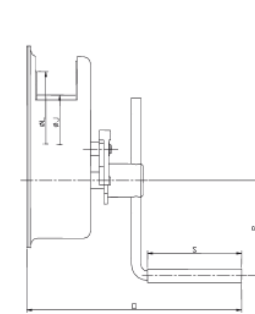
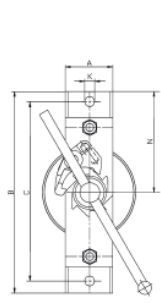
\* tavsiye edilen halat: DIN 3060 FE-znk 1770 sZ-spa

## Boyutlar model MWS

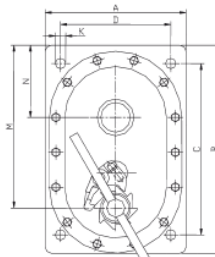
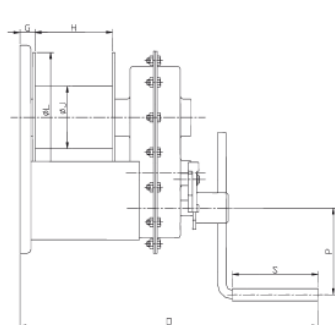
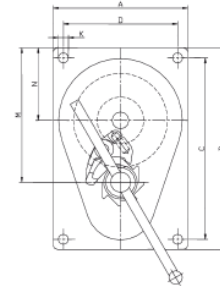
Model	MWS 125	MWS 300	MWS 500	MWS 1000	MWS 2000
A, mm	70	200	200	230	230
B, mm	305	300	300	340	340
C, mm	270	268	268	280	280
D, mm	168	168	168	180	180
G, mm	40	15	15	27	27
H, mm	85	60	60	126	126
Ø J, mm	32	50	70	102	121
K, mm	14	12	12	17	17
Ø L, mm	141	140	140	212	212
M, mm	198	198	198	266	288
N, mm	153	108	108	118	118
O, mm	325	263	263	425	425
P, mm	300	250	250	250	250
S, mm	128	128	128	128	128



Model MWS, kapasite 125kg



Model MWS, kapasite 300 - 500 kg



Model MWS, kapasite 1.000 - 2.000 kg