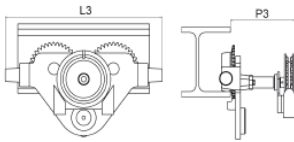


Teknik bilgiler model HTP

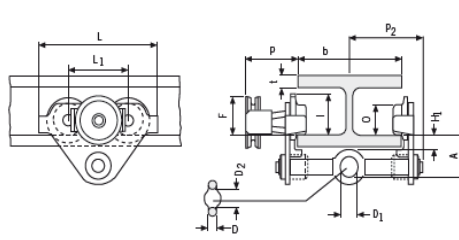
Model	EAN-No. 4025092*	Kapasite kg	Boyut	Kiriş flanş geniřliđi b mm	Kiriş flanş kalınlıđı t maks. mm	Dönüş yarıçapı min. m	El kuvveti WLL daN	Ađırlık* kg	*Kilitleme Tertibatı dahil ađırlık kg
HTP 500	*054874	500	A	50 - 220	25	0,9	-	8,0	14,5
HTP 1000	*054881	1.000	A	50 - 220	25	0,9	-	9,0	17,0
HTP 2000	*054898	2.000	A	66 - 220	25	1,15	-	16,0	24,0
HTP 3000	*054904	3.000	A	74 - 220	25	1,4	-	32,0	41,2
HTP 5000	*054911	5.000	A	90 - 220	25	1,8	-	48,0	58,5
HTP 500	*054928	500	B	160 - 300	40	0,9	-	10,6	17,1
HTP 1000	*054935	1.000	B	160 - 300	40	0,9	-	12,0	20,0
HTP 2000	*054942	2.000	B	160 - 300	40	1,15	-	19,3	27,3
HTP 3000	*054959	3.000	B	160 - 300	40	1,4	-	35,8	45,0
HTP 5000	*054966	5.000	B	180 - 300	40	1,8	-	52,2	62,7

Boyutlar model HTP

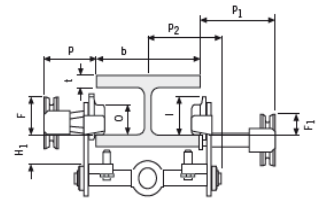
Model	HTP 500-A	HTP 1000-A	HTP 2000-A	HTP 3000-A	HTP 5000-A	HTP 500-B	HTP 1000-B	HTP 2000-B	HTP 3000-B	HTP 5000-B
A, mm	77	82,5	98,5	114	132,5	92	97,5	113,5	129	147,5
D, mm	16	17	22	26	33	16	17	22	26	33
D1, mm	25	30	40	48	60	25	30	40	48	60
D2, mm	30	35	47	58	70	30	35	47	58	70
F1, mm	46	46	46	46	45,5	46	46	46	46	45,5
H1, mm	30,5	30,5	30,5	30	30	45,5	45,5	45,5	45,5	45
l (HTP), mm	71,5	71,5	95,5	131	142,5	71,5	71,5	95,5	131	142,5
L, mm	260	260	310	390	450	260	260	310	390	450
L1, mm	130	130	150	180	209	130	130	150	180	209
O, mm	60	60	80	112	125	60	60	80	112	125
P1, mm	168	168	168	168	168	168	168	168	168	168
P2, mm	146	150	155	160	167,5	146	150	155	160	167,5
L3, mm	346	346	396	476	556	346	346	396	476	556



Döner manuel zincir kılavuzu ve tamponlar dahil Model HTG 500 - 5.000 kg



Model HTP/G 500 - 5.000 kg



Kilitleme tertibatı Model HTP/G 500 - 5.000 kg